

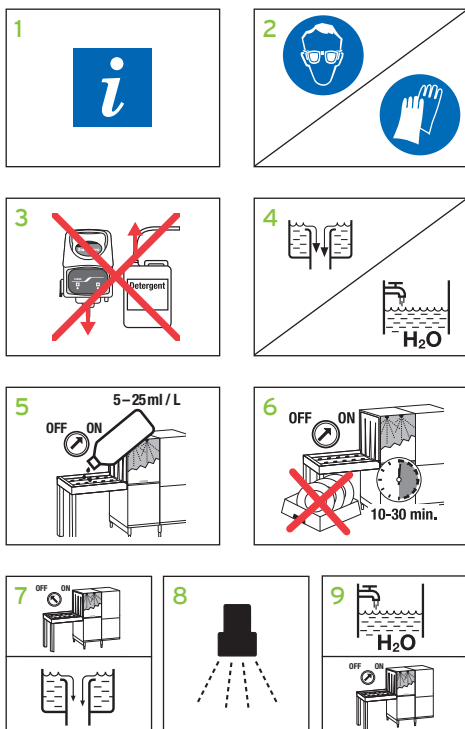


Lime-A-Way Extra HEAVY-DUTY DELIMER FOR COMMERCIAL DISHWASHERS

- Concentrated acidic formulation which lifts even the heaviest lime scale and oxide deposits.
- Effectively removes lime build-up in the dishwasher, leading ultimately to less energy consumption
- Improves efficiency of the dishwashing operation by keeping heating elements and rinse / wash nozzles in perfect condition.
- Completely strips stubborn oxide layers, recovering shine on stainless steel surfaces



USE INSTRUCTIONS



- 1 Check hygiene plan and product label for detailed use information
- 2 Wear suitable protective clothing, gloves and eye / face protection when handling the product
- 3 Do not dose detergent during deliming process (switch off dosing unit and air extraction)
- 4 Drain all wash tanks and fill with fresh water
- 5 Dose **Lime-A-Way Extra** 5 - 25 ml/L according to lime build-up into the wash tank. If necessary spray the product on all parts in the rinse zone
- 6 Start the machine and let it run for 10 - 30 minutes
- 7 Stop the machine and drain all wash tanks
- 8 Rinse with clear water
- 9 Refill the machine with fresh water. Start the machine again, let it run for a short time and switch the detergent dosage system on

SPECIAL NOTES / INFORMATION

Do not use on copper, zinc alloys and porous enamel or marble surfaces. Keep out of reach of children.

Wear suitable protective clothing, gloves and eye / face protection when handling the product.

Do not mix with anything but water.

Do not wash crockery during deliming process. Turn off dosing equipment.

For professional use only!

SAFETY

For further information and safety instructions, see product label and Safety Data Sheet.

STORAGE CONDITIONS

Store between 10 and 30 °C in original closed packaging only. Keep container tightly closed.

pH value: 1 (undiluted solution)

PACK SIZE

4 x 1 kg

2 x 5 L